

ขนาดกะทัดรัด ไม่เปลืองพื้นที่ติดตั้ง



DP-T60A



DP-T80A

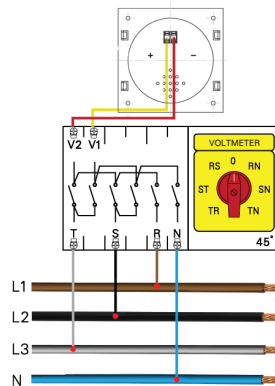
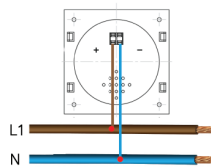
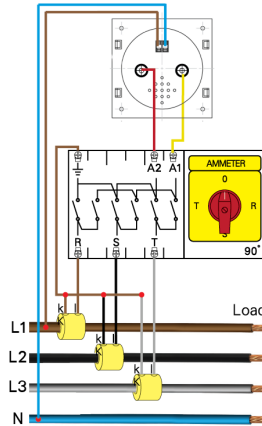
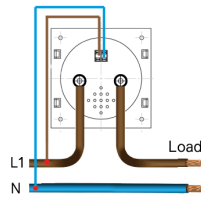


DP-T60V



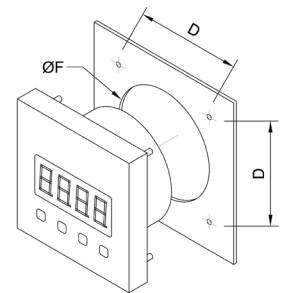
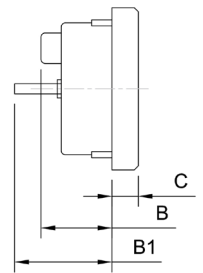
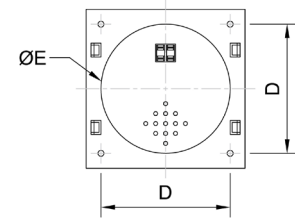
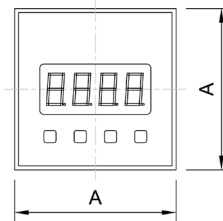
DP-T80V

CONNECTION DIAGRAM



SPECIFICATIONS

- Rated voltage : AC 500V
- Rated current : AC 5A
- Current Overload Rating : 1.2X rating (Continuous)
- Voltage Overload Rating : 1.2X rating (Continuous)
- Power consumption : <4VA / phase
- Internal resistance : Current < 200mΩ
Voltage ≥ 1kΩ / V
- Frequency : 45-65Hz.
- Accuracy Class : 1.0
- Operating temperature : -10°C to +55°C
- Storage temperature : -20°C to +70°C
- Relative humidity : ≤ 80% RH
- Insulation resistance : 100mΩ
- AC Withstand voltage : AC 2000V
- Display : High-Brightness



DP-T Series Physical Dimension (Unit : mm)

Model	A	B	B1	C	D	ØE	ØF
DP-T60	60	40	48	12	48	49	52
DP-T80	80	40	48	13	65	64	66

ดิจิตอลพานเนลมิเตอร์ (Digital Panel Meter) ~1.0

รุ่น (Model)	Connection	Measuring Range				Accuracy Class	Packing Pcs/Ctns
DP-T60V	Line to Neutral Line to Line	200-500V				1	100
DP-T60A	Direct	5A	10A	15A	20A	1	100
		30A	40A	50A	60A		
DP-T60A	Through current transformers (5A)	0-9999A (CT) X/5A				1	100
DP-T80V	Line to Neutral Line to Line	200-500V				1	100
DP-T80A	Direct	5A	10A	15A	20A	1	100
		30A	40A	50A	60A		
DP-T80A	Through current transformers (5A)	0-9999A (CT) X/5A				1	100

