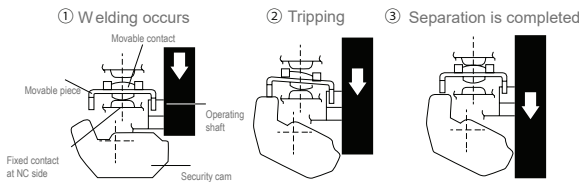




MAIN FEATURES :

- ✓ Forced open action device (NC contacts only), it can disconnect the contact when the contact has fusing and other failures.
- ✓ The set safety of lever ensures that gear ratcheting device is used between the action position indicator panel and the lever.
- ✓ Strengthened top seal structure improves the sealing performance.
- ✓ Built-in contact holder has fast-action type: 1NC / 1NO;
Slow-action: 1NC / 1NO and 2NC.

Forced disconnect fine of ☉ EN60947-5-1
(Only NC contact side has direct opening action function.)



Security cams are directly pressed to separate the movable piece

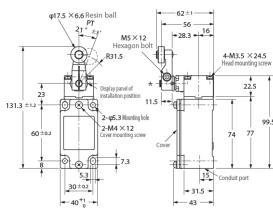
Rated voltage (V)	Non-inductive load(A)				Inductive load(A)			
	Resistive load		lamp load		Inductive load		Motor load	
	NC	NO	NC	NO	NC	NO	NC	NO
AC	125	10	3	1.5	10	5	2.5	
	250	10	2	1	10	3	1.5	
	400	10	1.5	0.8	3	1.5	0.8	
DC	8	10	6	3	10		6	
	14	10	6	3	10		6	
	30	6	4	3	6		4	
	125	0.8	0.2	0.2	0.8		0.2	
	250	0.4	0.1	0.1	0.4		0.1	

Performance	
Protection Level	IP66
Mechanical Life	More than 10,000,000 times*5
Electrical Life	More than 500,000 times(250Vac 10A, resistive load)
Operation Speed	1mm~0.5m/s
Operation Frequency	Mechanical: 120 times/min
	Electrical: 30 times/min
Rated Frequency	50/60Hz
Insulation resistance	100MΩ or more (DC500V Megameter) between homopolars, and between terminals and uncharged metal parts
Contact resistance	25MΩ or less (initial value)
Withstand Voltage (EN60947-5-1)	Between homopolar terminals: 2.5kV(quick-action type) / 4kV(slow-action type)
	Between heteropolar terminals: 2.5kV(slow-action type)
	Between charged metal parts: 4kV
	Between terminals and uncharged metal parts: 6kV
Rated Insulation Voltage (Ui)	600V(EN60947-5-1)
Reverse Voltage when on/off	1500V max.(EN60947-5-1)
Pollution degree (environmental conditions)	Pollution degree 3(EN60947-5-1)
Electric shock proof protection grade	Class I (with ground terminal)
Vibration	Malfunction: 10~55Hz 0.75mm single amplitude
Shock resistant	Duration: 1,000m/s ²
	Malfunction: 300m/s ²
Ambient Temperature	-20°C~+80°C(No ice or dew)
Ambient Humidity	Less than 95%RH
Weight	250g

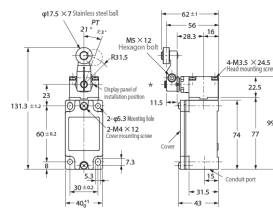
Action characteristics

Action characteristics			15N	12N	17N	18N	70N	71N	72N	81N	86N	87N
Action force	OF	Max.	9.41N	9.41N	2.12N	9.41N	18.63N	18.63N	18.63N	1.47N	1.47N	1.47N
Restore force	RF	Min.	1.47	1.47N	0.29N	1.47N	1.96N	1.96N	1.96N	-	-	-
Pretravel	PT	-	21° ±3°	21° ±3°	21° ±3°	21° ±3°	2mm	2mm	2mm	15	15	15
	PT	(2nd)	(45°)	(45°)	(45°)	(45°)	(3mm)	(3mm)	(3mm)	-	-	-
Overtravel	OT	Min.	50°	50°	50°	50°	5mm	5mm	5mm	-	-	-
Poor response travel	MD	Max.	12°	12°	12°	12°	1mm	1mm	1mm	-	-	-
Force disconnected pretravel	DOT	Min.	35°	35°	35°	35°	3.2mm	3.2mm	3.2mm	-	-	-
	DOT	Min.	55°	55°	55°	55°				-	-	-
Force disconnected force	DOF	Min.	19.61N	19.61N	19.61N	19.61N	49.03N	49.03N	49.03N	-	-	-
Total travel	TT	-	(75°)	(75°)	(75°)	(75°)	(7mm)	(7mm)	(7mm)	-	-	-
Free position	FP	Max.	-	-	-	-	38mm	51mm	51mm	-	-	-
Action position	OP	-	-	-	-	-	35±1mm	48±1mm	48±1mm	-	-	-

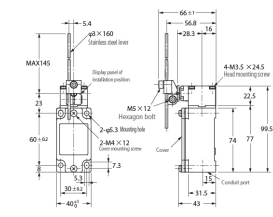




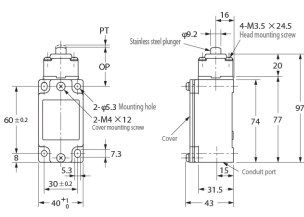
C4B-4112N



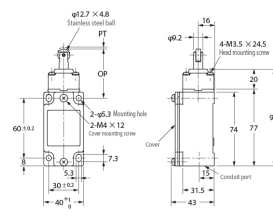
C4B-4115N



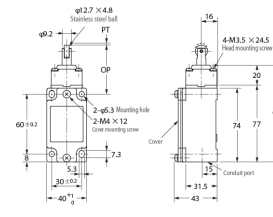
C4B-4117N



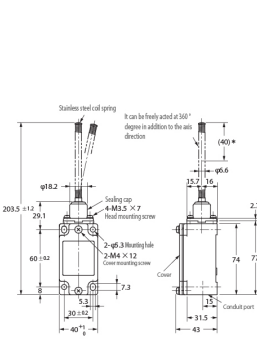
C4B-4170N



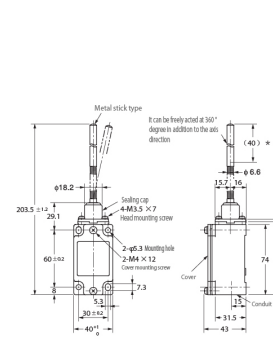
C4B-4171N



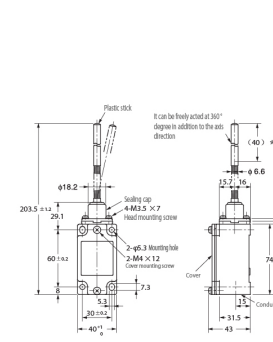
C4B-4172N



C4B-4181N



C4B-4186N



C4B-4187N

C4B Series

รุ่น (Model)	ลักษณะ หน้าสัมผัสทำงาน	Rated Current / Voltage	Contact Type	Terminal Type
C4B-4112N	Adjustable Roller Lever	10A / 250V	DPDT 1NO, 1NC	SCREW TYPE
C4B-4115N	Roller Lever	10A / 250V	DPDT 1NO, 1NC	
C4B-4117N	Adjustable Rod Lever	10A / 250V	DPDT 1NO, 1NC	
C4B-4170N	Top Plunger	10A / 250V	DPDT 1NO, 1NC	
C4B-4171N	Roller Plunger	10A / 250V	DPDT 1NO, 1NC	
C4B-4172N	Cross Roller Plunger	10A / 250V	DPDT 1NO, 1NC	
C4B-4181N	Coil Spring	10A / 250V	DPDT 1NO, 1NC	
C4B-4186N	Metal Stick	10A / 250V	DPDT 1NO, 1NC	
C4B-4187N	Coil Spring With Plastic End	10A / 250V	DPDT 1NO, 1NC	

