

MAIN FEATURES :

- ✓ High switch on and off capacity (16A)
- ✓ Economy model

Characteristics			
Item	CMV 10	CMV16	CMV 21
Operation speed	0.1mm~1m/s (Button type)		
Operation frequency	Mechanical : 240 operations/min Electrical : 20 operations/min		
Insulation resistance	100MΩ above(at 500Vdc)		
Contact resistance	15MΩmax.(initial value)		
Withstand voltage	Non-continuous terminals	1,000Vac, 50/60Hz for 1 min.	
	Current-carrying and non-current-carrying metal parts. Between terminal and earthing	1,500Vac, 50/60Hz for 1min.	2,000Vac, 50/60Hz for 1 min.
Vibration	Misoperation	10 to 55Hz, 1.5mm pairs swing	
Shock resistant	Durable	1,000m/s ² (100G)	
	Misoperation	200m/s ² (100G)	300m/s ² (100G)
Life	Mechanical	10,000,000 operations min.	
	Electrical	300,000 operations min.	100,000 operations min.
Temperature	-10°C ~ +65°C		
Humidity	85%RH		

Model Designations

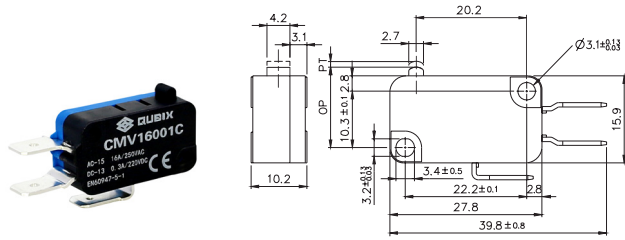
CMV 16 0 C
1 2 3

Item	Code	Description
1. Rated Current	10	10A
	16	16A
	21	21A
2. Head and driving rod	01	Pin Plunger
	11	Hinge Lever
	21	Short Hinge Lever
	31	Hinge Roller Lever
	41	Short Hinge Roller Lever
	51	Long Hinge Lever
61	Simulated Lever	
3. Terminal specifications	C	#250 terminal
	D	#187 terminal

Ratings

Spec.	Rated voltage	Noninductive Load (A)				Inductive Load (A)				Inrush Current (A)	
		Resistance Load		Lamp Load	Inductive Load		Motor Load				
		NC	NO	NC	NO	NC	NO	NC	NO	NC	NO
10A	250Vac	10		1.5		6		2		24 max.	
	8Vdc	10		3		6		3			
	30Vdc	6		3		6		3			
	125Vdc	0.3		0.1		0.6		0.1			
	250Vdc	0.3		0.05		0.3		0.05			
16A	250Vac	16		2		10		3		40 max.	
	8Vdc	16		4		10		6			
	30Vdc	10		4		10		4			
	125Vdc	0.6		0.1		0.6		0.1			
	250Vdc	0.3		0.05		0.3		0.05			
21A	250Vac	21		3		12		4		50 max.	
	8Vdc	21		5		12		7			
	30Vdc	14		5		12		5			
	125Vdc	0.6		0.1		0.6		0.1			
	250Vdc	0.3		0.05		0.3		0.05			

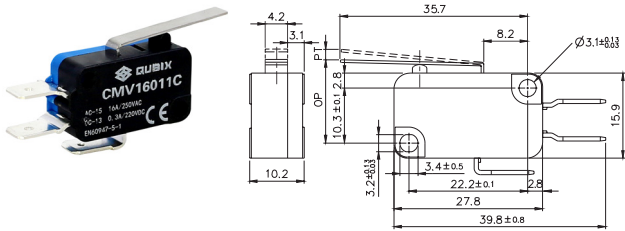
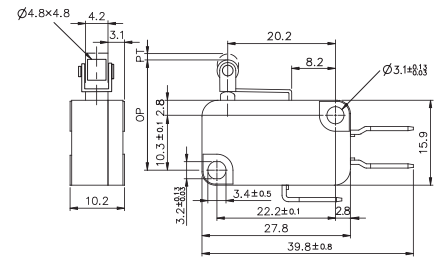




CMV16001C



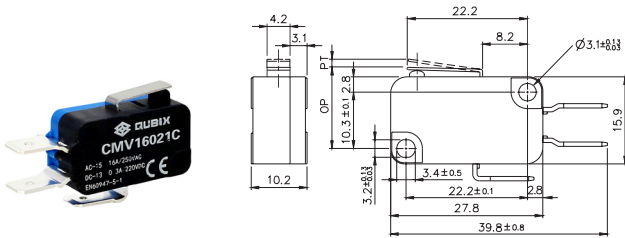
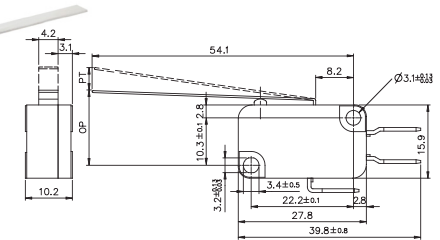
CMV16041C



CMV16011C



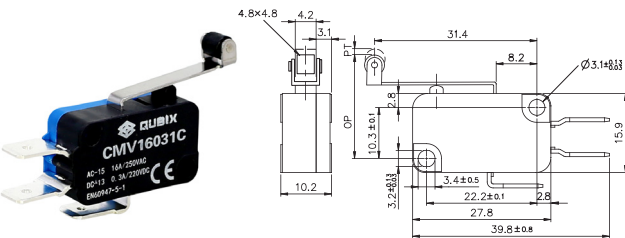
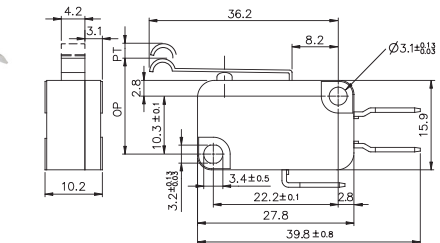
CMV16051C



CMV16021C



CMV16061C



CMV16031C

CMV16 Series

รุ่น (Model)	ลักษณะ หน้าสัมผัสทำงาน	Rated Current / Voltage	Contact Type	Terminal Type
CMV16001C	Pin Plunger	16A / 250V	SPDT 1NO, 1NC	NEMA TYPE #250 TAB 6.3 mm
CMV16011C	Hinge Lever	16A / 250V	SPDT 1NO, 1NC	
CMV16021C	Short Hinge Lever	16A / 250V	SPDT 1NO, 1NC	
CMV16031C	Hinge Roller Lever	16A / 250V	SPDT 1NO, 1NC	
CMV16041C	Short Hinge Roller Lever	16A / 250V	SPDT 1NO, 1NC	
CMV16051C	Long Hinge Lever	16A / 250V	SPDT 1NO, 1NC	
CMV16061C	Simulated Roller Lever	16A / 250V	SPDT 1NO, 1NC	

